



# Laterna

Historical Art of Projection

## Digital Tools

The examination tools of eLaterna show the glass slides as material objects for investigation and enable the comparison with other lantern slides. The digital content can be accessed together with all the relevant metadata. Mechanical details are documented by photographs and video.

A simulation tool displays movement effects such as movable glass plates, rack-work slides and dissolving views as interactive 2-D animations.

A directing tool shows reconstructions of the projection sequence of images and projection effects as well as recorded text and/or music on a timeline.

**eLaterna – Historical Art of Projection** is a new research platform, created by the project *The Fundamentals of Digitalisation of Works in the Historical Art of Projection*, funded by the German Research Foundation (DFG). It constitutes a major basis to understand the history of the magic lantern, the screen and the art of projection in historical context.

eLaterna wants to encourage collectors, researchers and show people to participate in collaborative projects. The two main resources *eLaterna Archive* and *eLaterna Companion* have been published in June 2018 as beta-versions.

eLaterna is a partner project of LUCERNA, a wide-ranging online resource on the magic lantern.



Credits:

Concept and curation: Ludwig Vogl-Bienek  
Design and programming: Roland Dahm, Li Sheng, Gan Yu  
Coordination: Thomas Burch, Martin Loiperdinger, Claudine Moulin  
Assitant editor: Daniela Müller-Kolb

V.i.S.d.P.:

Martin Loiperdinger  
University of Trier  
D-54296 Trier

Contact: [elaterna@uni-trier.de](mailto:elaterna@uni-trier.de)

**Kompetenzzentrum**  
Trier Center for Digital Humanities

**Universität Trier**

illuminago

Deutsche  
Forschungsgemeinschaft

DFG

Screen1900/  
Medienwissenschaft



## Archive

## DIGITAL EDITIONS

provide access to works in the historical art of projection as digital study objects

## Companion

## SURVEYS AND ESSAYS

provide information on the magic lantern, the screen and the art of projection

**Kompetenzzentrum**  
Trier Center for Digital Humanities

**Universität Trier**

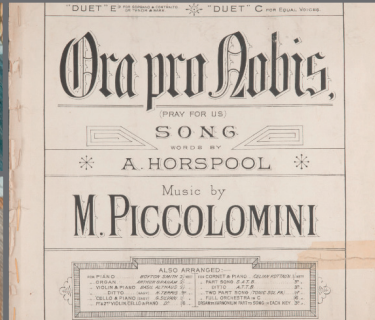


WWW.ELATERNA.UNI-TRIER.DE

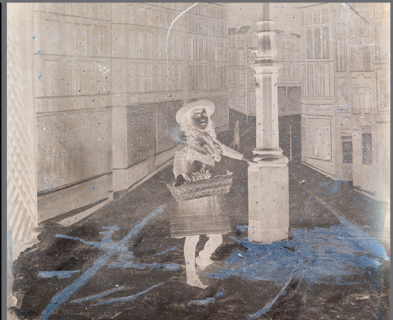




eLaterna Archive



eLaterna Companion

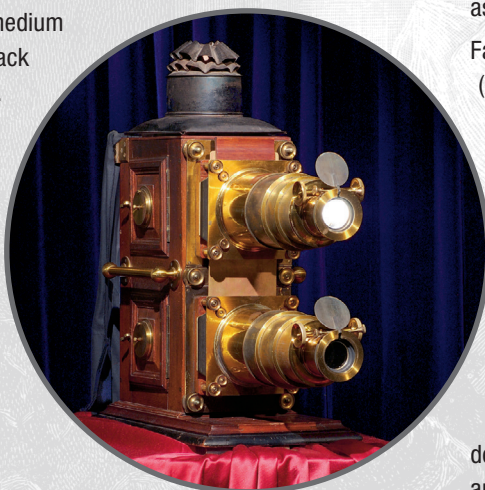


## Editions of works in the historical art of projection

The term 'historical art of projection' denotes magic lantern shows and lantern lectures which were most widespread and with the greatest audience in industrialized countries between the 1880s and the First World War.

The tradition of this visual medium and performing art reaches back to the seventeenth century.

The digital approach makes surviving works in the historical art of projection accessible for interdisciplinary research and teaching as well as for museum curators, media experts in education and specialist journalists.



**Digital archive editions (AE)** provide access to surviving works in the historical art of projection as digital study objects. All components are documented as material artefacts found in an archive. Digital tools show how they appear on the screen as mutable projected images made of light.

Facsimiles of readings or songs and all sorts of related items (e.g. negatives, boxes, catalogue entries) are presented as high-resolution zoomable images.

**Digital critical editions (CE)** provide information on the edited works. They are based on selected archive editions and deliver critical commentaries on the history of the origins and performances of the edited works. Collations compare different versions of the same work and examine their variance.

Surviving work components are compared with related items documented in archive editions which shed light on the origins and the use of a work. Digital reconstructions and theatrical experiments to show the performance of a slide set are documented by photography and video.

## Surveys and essays on the art of projection

The Companion contains basic information on the history of the magic lantern, the screen and the art of projection in an interdisciplinary context. Its contents are divided into the following sections: fundamentals, apparatus, works, performance and resources.

The Companion gives well-founded insights into the main topics of research and provides context for users of the editions in *eLaterna Archive*. It offers the methodological foundations as well as the basics of media and performance history to process digital source editions in eLaterna.

*eLaterna Companion* will always remain a dynamic work in progress; new articles are integrated continuously. Out-of-date content can be replaced by the authors via new editions of their articles.

